

Spring 2015 YOUNG ATHLETES FOOTWEAR  
USA



001



100



002

\$155.00

W0577

705457 | NIKE AIR MAX 2015 (GS)

UPPER: Engineered mesh combined with spacer mesh delivers ultimate comfort. Strategically placed no sew overlays provide seam-free support and flexibility.

MIDSOLE: Cushlon foam with integrated flex grooves and a full-length Max Air unit deliver plush cushioning for the ultimate ride.

OUTSOLE:

Designed to maximize comfort and style for a plush, luxurious and light ride.

001	BLACK/BRIGHT CRIMSON/BLUE LAGOON/WHITE	1/1-4/2	3.5Y-7Y	■
100	WHITE/BLACK//VOLT	1/1-4/2	3.5Y-7Y	■
002	BLACK//WHITE	c/o -10/2	3.5Y-7Y	



600



003



101

\$95.00

W0574

654155 | NIKE LUNARGLIDE 6 (GS)

UPPER: Engineered foam conforms to foot for secure fit and comfort, while dynamic Flywire technology and heel clip offer additional support.

OUTSOLE: Pressure mapped outsole promotes a more natural range of motion with optimal durability and traction.

With arguably the best upper fit in the industry, this lightweight shoe provides all day comfort.

MIDSOLE: Dynamic support platform with dual-density Lunarlon cushioning offers a plush platform with enhanced medial support.

600	BRIGHT CRIMSON/WHITE//BLACK	1/1-4/2	3.5Y-7Y	■
003	BLACK/LYON BLUE/LT GREEN SPARK/METALLIC SILVER	1/1-4/2	3.5Y-7Y	■
101	WHITE/VOLT/LIQUID LIME/BLACK	2/1-4/2	3.5Y-7Y	■



301

\$90.00

W0054

716536 | NIKE FREE 5.0 PRINT (GS)

MIDSOLE:

UPPER:

PROFILE: TAKING A CUE FROM THE BAREFOOT, IT'S DESIGNED TO MAXIMIZE A FOOT'S NATURAL RANGE OF MOTION WHILE PROVIDING PROTECTION & CUSHIONING FOR A SMOOTH RIDE.

OUTSOLE:

301	FLASH LIME/LIQUID LIME/LT GREEN SPARK/BLACK	1/1-4/2	3.5Y-7Y	■
-----	---	---------	---------	---



\$85.00  
W0524

644428 | NIKE FREE 5.0 (GS)

MIDSOLE:

Taking a cue from the barefoot, it's designed to maximize a foot's natural range of motion while providing protection and cushioning for a smooth ride.

OUTSOLE:

UPPER:

601	BRIGHT CRIMSON/HOT LAVA/BLACK	1/1-4/2	3.5Y-7Y	■
402	LYON BLUE/BLUE LAGOON/BLACK/METALLIC SILVER	1/1-4/2	3.5Y-7Y	■
403	COOL BLUE/WOLF GREY/WHITE/VOLT	1/1-4/2	3.5Y-7Y	■
001	BLACK/ANTHRACITE/WHITE	c/o -10/2	3.5Y-7Y	



\$62.00  
W0013

644431 | NIKE FREE 5 (PS)

Lightweight support and flexibility help provide a broad range of motion that is ideal for the developing feet of a young athlete runner.

MIDSOLE:

OUTSOLE:

UPPER:

601	BRIGHT CRIMSON/HOT LAVA/BLACK	1/1-4/2	10.5C-3Y	■
402	LYON BLUE/BLUE LAGOON/WHITE/METALLIC SILVER	1/1-4/2	10.5C-3Y	■
403	COOL BLUE/WOLF GREY/WHITE/VOLT	1/1-4/2	10.5C-3Y	■
001	BLACK/ANTHRACITE/WHITE	c/o -10/2	10.5C-3Y	



\$48.00  
W0042

644429 | NIKE FREE 5 (TDV)

Lightweight support and flexibility help provide a broad range of motion that is ideal for the developing feet of a young athlete runner.

MIDSOLE: Flex grooves within the Phylon midsole allow the foot to move naturally in multiple directions.

UPPER:

OUTSOLE:

601	BRIGHT CRIMSON/HOT LAVA/BLACK	1/1-4/2	W)2C-10C	■
402	LYON BLUE/BLUE LAGOON/BLACK/METALLIC SILVER	1/1-4/2	W)2C-10C	■
403	COOL BLUE/WOLF GREY/WHITE/VOLT	1/1-4/2	W)2C-10C	■
001	BLACK/ANTHRACITE/WHITE	c/o -10/2	W)2C-10C	



401



700

\$80.00

W0004

654412 | ZOOM PEGASUS 31 (GS)

OUTSOLE: Solid rubber with classic Waffle outsole lugs for durable traction.

UPPER: Breathable engineered mesh upper that features strategically placed overlays.

MIDSOLE: Cushlon foam works with a Nike Zoom unit in the heel for soft, responsive cushioning and great forefoot flexibility.

The cushioning and ride that neutral runners expect from this Legendary Nike Running shoe. With an even better fit.

401	LYON BLUE/CLEARWATER/BLUE LAGOON/BLACK	1/1-7/2	1Y-7Y	■
700	VOLT ICE/VOLT/ANTARCTICA/BLACK	2/1-7/2	1Y-7Y	■



700



400



001



401

\$80.00

W0004

705459 | NIKE FLEX FURY (GS)

OUTSOLE: Minimal rubber outsole for a lightweight and durable ride.

MIDSOLE: Midsole is a combination of dual-density foams that are data informed contoured for a perfect cushioned yet supportive flexible ride.

UPPER: Minimal upper construction with strategic static embroidery offers lightweight support and seamless fit that is close to the foot.

A low-profile, lightweight, and flexible running shoe for runners who want a cushioned, lightweight, fast trainer.

700	VOLT/DOVE GREY/BLUE GRAPHITE/BLACK	2/1-4/2	3.5Y-7Y	■
400	MIDNIGHT NAVY/LYON BLUE/DEEP ROYAL BLUE/WHITE	2/1-4/2	3.5Y-7Y	■
001	BLACK/VOLT/FLASH LIME/WHITE	2/1-7/2	3.5Y-7Y	■
401	BLUE GRAPHITE/CLASSIC CHARCL/BLACK/BLACK	2/1-4/2	3.5Y-7Y	■



007



402



008



001

\$70.00

W0053

654150 | NIKE DUAL FUSION RUN 3 (GS)

The ultimate combination of cushioning, and a smooth ride.

MIDSOLE: A dual-density system with a firm Phylon carrier and a soft interior Phylon core that creates a smooth, cushioned ride.

UPPER: Zonal sandwich mesh with a dynamic midfoot system provides a superior fit and support.

OUTSOLE:

007	WOLF GREY/VOLT/WHITE/BLACK	1/1-4/2	3.5Y-7Y	■
402	LYON BLUE/POISON GREEN/WHITE/METALLIC SILVER	1/1-4/2	3.5Y-7Y	■
008	CLASSIC CHARCL/DOVE GREY/WHITE/POISON GREEN	2/1-4/2	3.5Y-7Y	■
001	BLACK/HYPER CRIMSON/PHOTO BLUE/METALLIC SILVER	c/o -4/2	3.5Y-7Y	■



007



402



008



001

\$55.00

W0572

654153 | NIKE KIDS FUSION RUN 3 (PS)

MIDSOLE: Full-length Phylon midsole provides durable lightweight cushioning.

The ultimate combination of cushioning, and a smooth ride.

OUTSOLE: Rubber outsole enhances durability at high-wear zones.

UPPER: Zonal sandwich mesh with a dynamic midfoot system provides a superior fit and support.

007	WOLF GREY/VOLT/WHITE/BLACK	1/1-4/2	10.5C-3Y	■
402	LYON BLUE/POISON GREEN/WHITE/METALLIC SILVER	1/1-4/2	10.5C-3Y	■
008	CLASSIC CHARCL/DOVE GREY/WHITE/POISON GREEN	2/1-4/2	10.5C-3Y	■
001	BLACK/HYPER CRIMSON/PHOTO BLUE/METALLIC SILVER	c/o -1/2	10.5C-3Y	■



007



402



001

\$44.00

W0022

654154 | NIKE KIDS FUSION RUN 3 (TDV)

UPPER: Zonal sandwich mesh provides a superior fit and support. Hook and loop closure for easy entry.

OUTSOLE: N/A

MIDSOLE: Phylon midsole offers a unique blend of plush, lightweight cushioning, and enhanced support.

The ultimate combination of cushioning, and a smooth ride.

007	WOLF GREY/VOLT/WHITE/BLACK	1/1-4/2	W)2C-10C	■
402	LYON BLUE/POISON GREEN/WHITE/METALLIC SILVER	1/1-4/2	W)2C-10C	■
001	BLACK/HYPER CRIMSON/PHOTO BLUE/METALLIC SILVER	c/o -1/2	W)2C-10C	■



007



402



008



001

\$70.00

W0053

643241 | NIKE FLEX 2014 RUN (GS)

MIDSOLE: Soft Phylon core midsole gives great cushioning right where you need it.

OUTSOLE: Articulated Phylite carrier midsole provides flexible lightweight cushioning with great durability.

Flexible, lightweight comfort are the best way to describe this ride.

UPPER: Stretched inner sleeve with breathable overlay saddle gives the best fit and breathability.

007	BLACK/VOLT/LT GREEN SPARK	1/1-4/2	3.5Y-7Y	■
402	MIDNIGHT NAVY/LYON BLUE/WHITE/METALLIC SILVER	1/1-4/2	3.5Y-7Y	■
008	DARK GREY/GYM RED/BLACK/WHITE	1/1-4/2	3.5Y-7Y	■
001	BLACK/COOL GREY/WHITE/METALLIC SILVER	c/o -4/2	3.5Y-7Y	■
600	UNIVERSITY RED/BLACK/WHITE/COOL GREY	c/o -4/2	3.5Y-7Y	■



600



007



402



008



001

\$55.00

W0572

643242 | NIKE FLEX 2014 RUN (PS)

OUTSOLE: Articulated Phylite carrier midsole provides flexible lightweight cushioning with great durability.

MIDSOLE: Phylon midsole provides flexible lightweight cushioning.

Flexible, lightweight comfort are the best way to describe this ride.

UPPER: Stretched inner sleeve with breathable overlay saddle gives the best fit and breathability.

007	BLACK/VOLT//LT GREEN SPARK	1/1-4/2	10.5C-3Y	■
402	MIDNIGHT NAVY/LYON BLUE/WHITE/METALLIC SILVER	1/1-4/2	10.5C-3Y	■
008	DARK GREY/GYM RED/BLACK/WHITE	1/1-4/2	10.5C-3Y	■
001	BLACK/COOL GREY/WHITE/METALLIC SILVER	c/o -4/2	10.5C-3Y	
600	UNIVERSITY RED/BLACK/WHITE/COOL GREY	c/o -4/2	10.5C-3Y	



600



007



008



001



600

\$44.00

W0022

643245 | NIKE FLEX 2014 RUN (TDV)

OUTSOLE: Articulated Phylite carrier midsole provides flexible lightweight cushioning with great durability.

MIDSOLE: Phylon midsole provides flexible lightweight cushioning.

Flexible, lightweight comfort are the best way to describe this ride.

UPPER: Stretched inner sleeve with breathable overlay saddle gives the best fit and breathability.

007	BLACK/VOLT//LT GREEN SPARK	1/1-4/2	W)2C-10C	■
008	DARK GREY/GYM RED/BLACK/WHITE	1/1-4/2	W)2C-10C	■
001	BLACK/COOL GREY/WHITE/METALLIC SILVER	c/o -4/2	W)2C-10C	
600	UNIVERSITY RED/BLACK/WHITE/COOL GREY	c/o -4/2	W)2C-10C	



007



401



006



001

\$62.00

W0013

653701 | NIKE FLEX EXPERIENCE 3 (GS)

UPPER: Simple pattern and reduced layering enhances flexibility, bootie construction provides great lockdown.

Youthful with flexible lightweight comfort are the best way to describe this shoe.

MIDSOLE: Natural motion articulated Phylite gives a lightweight ride with great transition.

OUTSOLE: Rubber pods in toe and heel areas for high wear.

007	DARK GREY/BLACK/WHITE/GYM RED	1/1-4/2	3.5Y-7Y	■
401	LYON BLUE/MIDNIGHT NAVY/WHITE/METALLIC SILVER	1/1-4/2	3.5Y-7Y	■
006	CLASSIC CHARCL/BLUE GRAPHITE/DOVE GREY/POISON GREEN	2/1-4/2	3.5Y-7Y	■
001	BLACK/DARK GREY/WHITE/METALLIC SILVER	c/o -10/2	3.5Y-7Y	
600	GYM RED/WHITE/VOLT/BLACK	c/o -7/2	3.5Y-7Y	



600



007



401



006



001

\$52.00

W0062

653702 | NIKE FLEX EXPERIENCE 3 (PSV)

UPPER: Simple pattern and reduced layering enhances flexibility, bootie construction provides great lockdown.

Youthful with flexible lightweight comfort are the best way to describe this shoe.

MIDSOLE: Natural motion articulated Phylite gives a lightweight ride with great transition.

OUTSOLE: Rubber pods in toe and heel areas for high wear.

007	DARK GREY/BLACK/WHITE/GYM RED	1/1-4/2	10.5C-3Y	■
401	LYON BLUE/MIDNIGHT NAVY/WHITE/METALLIC SILVER	1/1-4/2	10.5C-3Y	■
006	CLASSIC CHARCL/BLUE GRAPHITE/DOVE GREY/POISON GREEN	2/1-4/2	10.5C-3Y	■
001	BLACK/DARK GREY/WHITE/METALLIC SILVER	c/o -7/2	10.5C-3Y	
600	GYM RED/WHITE//BLACK	c/o -7/2	10.5C-3Y	



600



007



401



006



001

\$42.00

W0012

653703 | NIKE FLEX EXPERIENCE 3 (TDV)

UPPER: Simple pattern and reduced layering enhances flexibility, bootie construction provides great lockdown.

Youthful with flexible lightweight comfort are the best way to describe this shoe.

MIDSOLE: Natural motion articulated Phylite gives a lightweight ride with great transition.

OUTSOLE: N/A

007	DARK GREY/BLACK/WHITE/GYM RED	1/1-4/2	W)2C-10C	■
401	LYON BLUE/MIDNIGHT NAVY/WHITE/METALLIC SILVER	1/1-4/2	W)2C-10C	■
006	CLASSIC CHARCL/BLUE GRAPHITE/DOVE GREY/POISON GREEN	2/1-4/2	W)2C-10C	■
001	BLACK/DARK GREY/WHITE/METALLIC SILVER	c/o -7/2	W)2C-10C	
600	GYM RED/WHITE//BLACK	c/o -7/2	W)2C-10C	



600



004



400



005



001

\$55.00

W0572

684979 | NIKE DOWNSHIFTER 6 (GS/PS)

For the runner who's looking for a daily trainer that provides a great combination of cushioning and breathability for all-day comfort and versatility.

UPPER: Sandwich mesh combined with supportive no sew synthetic provide optimal midfoot support while leather overlays provide heel lockdown.

OUTSOLE: Strategically placed rubber and flex grooves provide durability and traction with a great natural transition.

MIDSOLE: Articulated full-length Phylon midsole that provides lightweight, resilient cushioning as well as a more natural underfoot feel.

004	DARK GREY/BLACK/WHITE/CHALLENGE RED	1/1-4/2	10.5C-7Y	■
400	LYON BLUE/OBSIDIAN/BLUE LAGOON/WHITE	1/1-10/2	10.5C-7Y	■
005	DARK GREY/BLACK/WHITE/VOLT	2/1-10/2	10.5C-7Y	■
001	WOLF GREY/VOLT/WHITE/BLACK	c/o -4/2	10.5C-7Y	



004



400



005

\$44.00

W0022

684981 | NIKE DOWNSHIFTER 6 (TD)

UPPER: Sandwich mesh combined with supportive no sew synthetic provide optimal midfoot support while leather overlays provide heel lockdown.

MIDSOLE: Articulated, full-length Phylon midsole provides lightweight, responsive cushioning and a natural feel underfoot.

OUTSOLE: Deep flex grooves provide a more efficient, natural range of motion.

Trainer that provides a great combination of cushioning and breathability for all-day comfort and versatility.

004	DARK GREY/BLACK/WHITE/CHALLENGE RED	1/1-4/2	W)2C-10C	■
400	LYON BLUE/OBSIDIAN/BLUE LAGOON/WHITE	1/1-10/2	W)2C-10C	■
005	DARK GREY/BLACK/WHITE/VOLT	2/1-4/2	W)2C-10C	■



017



018



016



013

\$52.00

W0062

555082 | NIKE REVOLUTION 2 (GS)

A shoe that delivers breathable comfort, a smooth transition, and a young look for running and everyday use.

MIDSOLE: Articulated, full-length Phylon midsole provides lightweight, responsive cushioning and a natural feel underfoot.

UPPER: Lightweight open mesh throughout the upper enhances breathability and comfort. Strategically placed supportive leather overlays for support.

OUTSOLE: Environmentally preferred rubber in a modified Waffle outsole configuration. Deep flex grooves provide a more efficient, natural range of motion.

017	DARK GREY/WOLF GREY/WHITE/METALLIC SILVER	1/1-4/2	3.5Y-7Y	■
018	WOLF GREY/LYON BLUE/BLACK/WHITE	1/1-4/2	3.5Y-7Y	■
016	BLACK/WHITE/VOLT/METALLIC SILVER	2/1-4/2	3.5Y-7Y	■
013	MAGNET GREY/BLACK/WHITE/CHALLENGE RED	c/o -7/2	3.5Y-7Y	■



017



018



016



013

\$48.00

W0042

555083 | NIKE REVOLUTION 2 (PSV)

A shoe that delivers breathable comfort, a smooth transition, and a young look for running and everyday use.

MIDSOLE: Articulated, full-length Phylon midsole provides lightweight, responsive cushioning and a natural feel underfoot.

UPPER: Lightweight open mesh throughout the upper enhances breathability and comfort. Strategically placed supportive leather overlays for support.

OUTSOLE: Deep flex grooves provide a more efficient, natural range of motion.

017	DARK GREY/WOLF GREY/WHITE/METALLIC SILVER	1/1-4/2	10.5C-3Y	■
018	WOLF GREY/LYON BLUE/BLACK/WHITE	1/1-4/2	10.5C-3Y	■
016	BLACK/WHITE/VOLT/METALLIC SILVER	2/1-4/2	10.5C-3Y	■
013	MAGNET GREY/BLACK/WHITE/CHALLENGE RED	c/o -7/2	10.5C-3Y	■





017



018



016



013

\$42.00

W0012

555084 | NIKE REVOLUTION 2 (TDV)

A shoe that delivers breathable comfort, a smooth transition, and a young look for running and everyday use.

MIDSOLE: Articulated, full-length Phylon midsole provides lightweight, responsive cushioning and a natural feel underfoot.

UPPER: Lightweight open mesh throughout the upper enhances breathability and comfort. Strategically placed supportive leather overlays for support.

OUTSOLE: Deep flex grooves provide a more efficient, natural range of motion.

017	DARK GREY/WOLF GREY/WHITE/METALLIC SILVER	1/1-4/2	W)2C-10C	■
018	WOLF GREY/LYON BLUE/BLACK/WHITE	1/1-4/2	W)2C-10C	■
016	BLACK/WHITE/VOLT/METALLIC SILVER	2/1-4/2	W)2C-10C	■
013	MAGNET GREY/BLACK/WHITE/CHALLENGE RED	c/o -4/2	W)2C-10C	



003

\$55.00

W0572

684979 | NIKE DOWNSHIFTER 6 (GS/PS)

For the runner who's looking for a daily trainer that provides a great combination of cushioning and breathability for all-day comfort and versatility.

UPPER: Sandwich mesh combined with supportive no sew synthetic provide optimal midfoot support while leather overlays provide heel lockdown.

OUTSOLE: Strategically placed rubber and flex grooves provide durability and traction with a great natural transition.

MIDSOLE: Articulated full-length Phylon midsole that provides lightweight, resilient cushioning as well as a more natural underfoot feel.

003	BLACK/COOL GREY/WHITE/METALLIC SILVER	c/o -10/2	10.5C-7Y	
-----	---------------------------------------	-----------	----------	--



003

\$44.00

W0022

684981 | NIKE DOWNSHIFTER 6 (TD)

UPPER: Sandwich mesh combined with supportive no sew synthetic provide optimal midfoot support while leather overlays provide heel lockdown.

MIDSOLE: Articulated, full-length Phylon midsole provides lightweight, responsive cushioning and a natural feel underfoot.

OUTSOLE: Deep flex grooves provide a more efficient, natural range of motion.

Trainer that provides a great combination of cushioning and breathability for all-day comfort and versatility.

003	BLACK/COOL GREY/WHITE/METALLIC SILVER	c/o -10/2	W)2C-10C	
-----	---------------------------------------	-----------	----------	--



001



002

\$72.00

W0063

631478 | NIKE AIR MAX RUN LITE 5 (GS)

MIDSOLE: Full-length Phylon midsole provides soft, lightweight cushioning, combined with ramp Air-Sole unit for enhanced structural support and durability.

UPPER: Mono-mesh combined with TPU film overlays throughout the midfoot and forefoot to provide lightweight support, breathability.

OUTSOLE: Rubber outsole in the heel provides durable traction. Deep flex grooves improve flexibility.

Multi-functional running shoe, with great upper support and heel cushioning and a fast, bold look.

001	BLACK/PURE PLATINUM/METALLIC SILVER	c/o -4/2	3.5Y-7Y
002	DARK GREY/LT CRIMSON/BLACK	c/o -4/2	3.5Y-7Y



401



400



001

\$65.00

W0523

725065 | NIKE FLEX FURY (PS)

OUTSOLE: Minimal rubber outsole for a lightweight and durable ride.

MIDSOLE: Midsole is a combination of dual-density foams that are data informed contoured for a perfect cushioned yet supportive flexible ride.

UPPER: Minimal upper construction with strategic static embroidery offers lightweight support and seamless fit that is close to the foot.

A low-profile, lightweight, and flexible running shoe for runners who want a cushioned, lightweight, fast trainer.

401	BLUE GRAPHITE/CLASSIC CHARCL/BLACK/BLACK	2/1-4/2	10.5C-3Y	■
400	MIDNIGHT NAVY/LYON BLUE/DEEP ROYAL BLUE/WHITE	2/1-4/2	10.5C-3Y	■
001	BLACK/VOLT/FLASH LIME/WHITE	1/1-7/2	10.5C-3Y	■



400



001

\$45.00

W0522

725068 | NIKE FLEX FURY (TD)

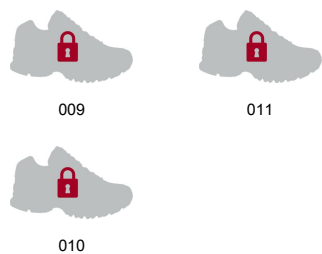
OUTSOLE: Minimal rubber outsole for a lightweight and durable ride.

MIDSOLE: Midsole foam contoured for a perfect cushioned yet supportive flexible ride.

A low-profile, lightweight, and flexible running shoe.

UPPER:

400	MIDNIGHT NAVY/LYON BLUE/DEEP ROYAL BLUE/WHITE	1/1-4/2	W)2C-10C	■
001	BLACK/VOLT/FLASH LIME/WHITE	1/1-7/2	W)2C-10C	■



\$100.00  
W0035

653645 | NIKE SOLDIER VIII (GS)

OUTSOLE: TBD  
PROFILE: TBD  
MIDSOLE: TBD  
UPPER: TBD

009	BLACK/GYM RED/BRIGHT CRIMSON/WHITE	1/1-4/2	3.5Y-7Y	■
011	WOLF GREY/MIDNIGHT NAVY/WHITE/LYON BLUE	1/1-4/2	3.5Y-7Y	■
010	DARK GREY/WOLF GREY//TOTAL ORANGE	2/1-4/2	3.5Y-7Y	■



\$75.00  
W5793

653646 | NIKE SOLDIER VIII (PS)

OUTSOLE: TBD  
PROFILE: TBD  
MIDSOLE: TBD  
UPPER: TBD

009	BLACK/GYM RED/BRIGHT CRIMSON/WHITE	1/1-4/2	10.5C-3Y	■
010	DARK GREY/WOLF GREY//TOTAL ORANGE	2/1-4/2	10.5C-3Y	■



\$52.00  
W6572

653647 | NIKE SOLDIER VIII (TD)

OUTSOLE: TBD  
PROFILE: TBD  
MIDSOLE: TBD  
UPPER: TBD

009	BLACK/GYM RED/BRIGHT CRIMSON/WHITE	1/1-4/2	WJ2C-10C	■
010	DARK GREY/WOLF GREY//TOTAL ORANGE	2/1-4/2	WJ2C-10C	■



\$70.00  
W0053

653754 | AIR MAX STUTTER STEP 2 (GS)

Designed for the dynamic style of today's multi-position player.  
OUTSOLE: Solid rubber multi-directional herringbone outsole.  
MIDSOLE: Includes Air-Sole unit in the heel.  
UPPER: Articulated upper paired with a conventional tongue.

006	WOLF GREY/DARK GREY/GYM RED/BRIGHT CRIMSON	1/1-4/2	3.5Y-7Y	■
005	DARK GREY/BLACK/LT GREEN SPARK/VOLT	2/1-4/2	3.5Y-7Y	■



006



005

\$60.00

W0003

653755 | STUTTER STEP 2 (PS)

Designed for the dynamic style of today's multi-position player.

MIDSOLE: Full-length PU.

OUTSOLE: Solid rubber multi-directional herringbone outsole.

UPPER: Articulated upper paired with a conventional tongue.

006	WOLF GREY/DARK GREY/GYM RED/BRIGHT CRIMSON	1/1-4/2	10.5C-3Y	■
005	DARK GREY/BLACK/LT GREEN SPARK/VOLT	2/1-4/2	10.5C-3Y	■



007



001

\$55.00

W0572

599187 | TEAM HUSTLE D 6 (GS)

OUTSOLE: Non-marking rubber with traditional herringbone pattern.

UPPER: Sleek and updated design that provides ultimate comfort and lockdown.

Proven performance at a great value.

MIDSOLE: Full-length rubber midsole with deep flex grooves provides a solid but flexible ride.

007	DARK GREY/LT GREEN SPARK/METALLIC SILVER	1/1-7/2	3.5Y-7Y	■
001	BLACK//BLACK	c/o -7/2	3.5Y-7Y	



007



001

\$48.00

W0042

599188 | TEAM HUSTLE D 6 (PS)

OUTSOLE: Non-marking rubber with traditional herringbone pattern.

UPPER: Sleek and updated design that provides ultimate comfort and lockdown.

Proven performance at a great value.

MIDSOLE: Full-length rubber midsole with deep flex grooves provides a solid but flexible ride.

007	DARK GREY/LT GREEN SPARK/METALLIC SILVER	1/1-7/2	10.5C-3Y	■
001	BLACK/WHITE//BLACK	c/o -7/2	10.5C-3Y	



007

\$40.00

W0002

599189 | TEAM HUSTLE D 6 (TD)

OUTSOLE: Non-marking rubber with traditional herringbone pattern.

UPPER: Sleek and updated design that provides ultimate comfort and lockdown.

Proven performance at a great value.

MIDSOLE: Full-length rubber midsole with deep flex grooves provides a solid but flexible ride.

007	DARK GREY/LT GREEN SPARK/METALLIC SILVER	1/1-5/2	W)2C-10C	■
-----	--	---------	----------	---



001



600

\$70.00

W0053

653754 | AIR MAX STUTTER STEP 2 (GS)

Designed for the dynamic style of today's multi-position player.

OUTSOLE: Solid rubber multi-directional herringbone outsole.

MIDSOLE: Includes Air-Sole unit in the heel.

UPPER: Articulated upper paired with a conventional tongue.

001	BLACK/STEALTH/ANTHRACITE/WHITE	c/o -10/2	3.5Y-7Y
600	UNIVERSITY RED/BLACK/COOL GREY/WHITE	c/o -10/2	3.5Y-7Y



001



600



400

\$60.00

W0003

653755 | STUTTER STEP 2 (PS)

Designed for the dynamic style of today's multi-position player.

MIDSOLE: Full-length PU.

OUTSOLE: Solid rubber multi-directional herringbone outsole.

UPPER: Articulated upper paired with a conventional tongue.

001	BLACK/STEALTH/ANTHRACITE/WHITE	c/o -10/2	10.5C-3Y
600	UNIVERSITY RED/BLACK/COOL GREY/WHITE	c/o -4/2	10.5C-3Y
400	GAME ROYAL/STEALTH/PHOTO BLUE/WHITE	c/o -4/2	10.5C-3Y



400

\$70.00

W0053

653754 | AIR MAX STUTTER STEP 2 (GS)

Designed for the dynamic style of today's multi-position player.

OUTSOLE: Solid rubber multi-directional herringbone outsole.

MIDSOLE: Includes Air-Sole unit in the heel.

UPPER: Articulated upper paired with a conventional tongue.

400	GAME ROYAL/STEALTH/PHOTO BLUE/WHITE	c/o -7/2	3.5Y-7Y
-----	-------------------------------------	----------	---------



401



006



004

\$55.00

W0572

599187 | TEAM HUSTLE D 6 (GS)

OUTSOLE: Non-marking rubber with traditional herringbone pattern.

UPPER: Sleek and updated design that provides ultimate comfort and lockdown.

Proven performance at a great value.

MIDSOLE: Full-length rubber midsole with deep flex grooves provides a solid but flexible ride.

401	GYM BLUE//WOLF GREY	c/o -4/2	3.5Y-7Y
006	BLACK/MTLC COOL GREY//UNIVERSITY RED	c/o -4/2	3.5Y-7Y
004	BLACK/WHITE/PINK FOIL/METALLIC SILVER	c/o -4/2	3.5Y-7Y



401



006



004

\$48.00

W0042

599188 | TEAM HUSTLE D 6 (PS)

OUTSOLE: Non-marking rubber with traditional herringbone pattern.

UPPER: Sleek and updated design that provides ultimate comfort and lockdown.

Proven performance at a great value.

MIDSOLE: Full-length rubber midsole with deep flex grooves provides a solid but flexible ride.

401	GYM BLUE//WOLF GREY	c/o -4/2	3.5Y-7Y
006	BLACK/MTLC COOL GREY//UNIVERSITY RED	c/o -4/2	3.5Y-7Y
004	BLACK/WHITE/PINK FOIL/METALLIC SILVER	c/o -4/2	3.5Y-7Y



401



006

\$40.00

W0002

599189 | TEAM HUSTLE D 6 (TD)

OUTSOLE: Non-marking rubber with traditional herringbone pattern.

UPPER: Sleek and updated design that provides ultimate comfort and lockdown.

Proven performance at a great value.

MIDSOLE: Full-length rubber midsole with deep flex grooves provides a solid but flexible ride.

401	GYM BLUE//WOLF GREY	c/o -4/2	WJ2C-10C
006	BLACK/MTLC COOL GREY//UNIVERSITY RED	c/o -4/2	WJ2C-10C



006



001



003

\$62.00

W0013

653883 | NIKE FLEX SUPREME TR 3 (GS/PS)

UPPER: Bonded mesh panels and leather overlays offer maximum breathability, flexibility and durability where needed.

OUTSOLE: Existing outsole that is Phylon for flexibility and strategically place rubber pods for durability.

MIDSOLE: Existing midsole single density Phylon.

All day, everyday, school and play shoe that offers natural motion and supreme comfort in a training shoe.

006	DARK GREY/WOLF GREY/WHITE/TOTAL ORANGE	1/1-7/2	10.5C-7Y	■
001	BLACK/WHITE/PURE PLATINUM/COOL GREY	c/o -10/2	10.5C-7Y	
003	BLACK/HYPER CRIMSON//GYM RED	c/o -4/2	10.5C-7Y	



001

\$62.00

W0013

652826 | NIKE FLEX SUPREME 3 (WIDE) (GS/PS)

UPPER: Bonded mesh panels and leather overlays offer maximum breathability, flexibility and durability where needed.

All day everyday school and play shoe that offers natural motion and supreme comfort in a training shoe.

MIDSOLE: Existing midsole single-density Phylon.

OUTSOLE: Existing outsole that is Phylon for flexibility and strategically placed rubber pods for durability.

001	BLACK/WHITE/PURE PLATINUM/COOL GREY	c/o -7/2	10.5C-7Y	
-----	-------------------------------------	----------	----------	--



006



001

\$44.00

W0022

653884 | NIKE FLEX SUPREME TR 3 (TDV)

UPPER: Bonded mesh panels and leather overlays offer maximum breathability, flexibility and durability where needed.

All day, everyday, school and play shoe that offers natural motion and supreme comfort in a training shoe with alternate closure.

OUTSOLE: Existing outsole that is Phylon for flexibility and strategically place rubber pods for durability.

MIDSOLE: Existing midsole single density Phylon.

006	DARK GREY/WOLF GREY/WHITE/TOTAL ORANGE	1/1-7/2	W)2C-10C	■
001	BLACK/WHITE/PURE PLATINUM/COOL GREY	c/o -7/2	W)2C-10C	

IMAGE



UNAVAILABLE

IMAGE  
UNAVAILABLE

001

\$44.00

W0022

652827 | NIKE FLEX SUPREME TR 3 (WIDE) (TDV)

UPPER: Bonded mesh panels and leather overlays offer maximum breathability, flexibility and durability where needed.

All day everyday school and play shoe that offers natural motion and supreme comfort in a training shoe.

MIDSOLE: Existing midsole single-density Phylon.

OUTSOLE: Existing outsole that is Phylon for flexibility and strategically placed rubber pods for durability.

001	BLACK/WHITE/PURE PLATINUM/COOL GREY	c/o -7/2	W)2C-10C	
-----	-------------------------------------	----------	----------	--



016

\$32.00

W0061

454501 | PICO 4 (TDV)

Pico 4 provides a lightweight, durable and flexible shoe that offers a fun aesthetic as well as easy on off for parents and toddler on the go.

MIDSOLE:

UPPER: Hook-and-loop double strap closure for secure fit and easy on off reduced overlays from previous model for improved flexibility.

OUTSOLE: Proven, existing, lightweight Phylon tooling for traction, durability and flexibility color dams on outsole for color pop opportunity.

016	BLACK/BRIGHT CRIMSON/WHITE/BLUE LAGOON	1/1-5/2	W)2C-10C	■
-----	--	---------	----------	---



101

\$32.00

W0061

454506 | PICO 4 (WIDE) (TDV)

Pico 4 provides a lightweight, durable and flexible shoe that offers a fun aesthetic as well as easy on off for parents and toddler on the go.

MIDSOLE: N/A

UPPER: Hook-and-loop double strap closure for secure fit and easy on off reduced overlays from previous model for improved flexibility.

OUTSOLE: Proven, existing, lightweight Phylon tooling for traction, durability and flexibility color dams on outsole for color pop opportunity.

101	WHITE///MIDNIGHT NAVY	c/o -7/2	2C-10C	
-----	-----------------------	----------	--------	--





002



100

\$155.00

W0577

705458 | NIKE AIR MAX 2015 (GS)

UPPER: Engineered mesh combined with spacer mesh delivers ultimate comfort. Strategically placed no sew overlays provide seam-free support and flexibility.

MIDSOLE: Cushlon foam with integrated flex grooves and a full-length Max Air unit deliver plush cushioning for the ultimate ride.

OUTSOLE:

Designed to maximize comfort and style for a plush, luxurious and light ride.

002	BLACK/PINK POW/METALLIC SILVER/WHITE	c/o -4/2	3.5Y-7Y	
100	WHITE/WHITE/METALLIC SILVER/PINK POW	2/1-4/2	3.5Y-7Y	■



100



601



003

\$95.00

W0574

654156 | NIKE LUNARGLIDE 6 (GS)

UPPER: Engineered foam conforms to foot for secure fit and comfort, while dynamic Flywire technology and heel clip offer additional support.

OUTSOLE: Pressure mapped outsole promotes a more natural range of motion with optimal durability and traction.

With arguably the best upper fit in the industry, this lightweight shoe provides all day comfort.

MIDSOLE: Dynamic support platform with dual-density Lunarlon cushioning offers a plush platform with enhanced medial support.

100	WHITE/VOLT/PINK POW/METALLIC SILVER	1/1-4/2	3.5Y-7Y	■
601	HOT PINK/WHITE/WOLF GREY/METALLIC SILVER	1/1-4/2	3.5Y-7Y	■
003	BLACK/BOLD BERRY/TOTAL ORANGE/PINK POW	2/1-4/2	3.5Y-7Y	■



300

\$90.00

W0054

716537 | NIKE FREE 5.0 PRINT (GS)

MIDSOLE:

UPPER:

PROFILE: TAKING A CUE FROM THE BAREFOOT, IT'S DESIGNED TO MAXIMIZE A FOOT'S NATURAL RANGE OF MOTION WHILE PROVIDING PROTECTION & CUSHIONING FOR A SMOOTH RIDE.

OUTSOLE:

300	MENTA/GREEN GLOW/BLACK/HOT PINK	2/1-4/2	3.5Y-7Y	■
-----	---------------------------------	---------	---------	---



\$85.00

W0524

644446 | NIKE FREE 5.0 (GS)

MIDSOLE:

UPPER:

Taking a cue from the barefoot, it's designed to maximize a foot's natural range of motion while providing protection and cushioning for a smooth ride.

OUTSOLE:

401	BLUE LAGOON/WHITE/VOLT/PINK POW	1/1-4/2	3.5Y-7Y	■
602	HOT PINK/WHITE//BLACK	1/1-4/2	3.5Y-7Y	■
006	BLACK/PINK POW/BOLD BERRY/TOTAL ORANGE	1/1-4/2	3.5Y-7Y	■
502	HYPER GRAPE/HYPER PINK/VOLT/PHOTO BLUE	c/o -4/2	3.5Y-7Y	



\$62.00

W0013

644449 | NIKE FREE 5 (PS)

MIDSOLE:

Lightweight support and flexibility help provide a broad range of motion that is ideal for the developing feet of a young athlete runner.

UPPER:

OUTSOLE:

401	BLUE LAGOON/WHITE/VOLT/PINK POW	1/1-4/2	10.5C-3Y	■
602	HOT PINK/WHITE//BLACK	1/1-4/2	10.5C-3Y	■
006	BLACK/PINK POW/BOLD BERRY/TOTAL ORANGE	1/1-4/2	10.5C-3Y	■
502	HYPER GRAPE/HYPER PINK/VOLT/PHOTO BLUE	c/o -4/2	10.5C-3Y	



\$48.00

W0042

644447 | NIKE FREE 5 (TDV)

Lightweight support and flexibility help provide a broad range of motion that is ideal for the developing feet of a young athlete runner.

UPPER:

OUTSOLE: N/A

MIDSOLE: Flex grooves within the Phylon midsole allow the foot to move naturally in multiple directions.

401	BLUE LAGOON/WHITE/VOLT/PINK POW	1/1-4/2	W)2C-10C	■
602	HOT PINK/WHITE//BLACK	1/1-4/2	W)2C-10C	■
006	BLACK/PINK POW/BOLD BERRY/TOTAL ORANGE	1/1-4/2	W)2C-10C	■
502	HYPER GRAPE/HYPER PINK/VOLT/PHOTO BLUE	c/o -4/2	W)2C-10C	



005



501

\$80.00

W0004

654413 | ZOOM PEGASUS 31 (GS)

OUTSOLE: Solid rubber with classic Waffle outsole lugs for durable traction.

UPPER: Breathable engineered mesh upper that features strategically placed overlays.

MIDSOLE: Cushlon foam works with a Nike Zoom unit in the heel for soft, responsive cushioning and great forefoot flexibility.

The cushioning and ride that neutral runners expect from this Legendary Nike Running shoe. With an even better fit.

005	PURE PLATINUM/BLUE LAGOON/VOLT/METALLIC SILVER	1/1-4/2	1Y-7Y	■
501	BOLD BERRY/WHITE/PINK POW/BLACK	2/1-7/2	1Y-7Y	■



500



001

\$80.00

W0004

705460 | NIKE FLEX FURY (GS)

OUTSOLE: Minimal rubber outsole for a lightweight and durable ride.

MIDSOLE: Midsole is a combination of dual-density foams that are data informed contoured for a perfect cushioned yet supportive flexible ride.

UPPER: Minimal upper construction with strategic static embroidery offers lightweight support and seamless fit that is close to the foot.

A low-profile, lightweight, and flexible running shoe for runners who want a cushioned, lightweight, fast trainer.

500	BOLD BERRY/FUCHSIA GLOW/FUCHSIA FLASH/BLACK	2/1-4/2	3.5Y-7Y	■
001	BLACK/PINK POW/VIVID PINK/WHITE	2/1-10/2	3.5Y-7Y	■



401



502



600



003

\$70.00

W0053

654143 | NIKE DUAL FUSION RUN 3 (GS)

The ultimate combination of cushioning, and a smooth ride.

MIDSOLE: A dual-density system with a firm Phylon carrier and a soft interior Phylon core that creates a smooth, cushioned ride.

UPPER: Zonal sandwich mesh with a dynamic midfoot system provides a superior fit and support.

OUTSOLE:

401	CLEARWATER/VOLT/PINK POW/METALLIC SILVER	1/1-4/2	3.5Y-7Y	■
502	BOLD BERRY/PINK POW/BLACK/TOTAL ORANGE	1/1-4/2	3.5Y-7Y	■
600	HOT PINK/BLACK/FIREBERRY/WHITE	2/1-4/2	3.5Y-7Y	■
003	LT MAGNET GREY/HYPER JADE/VOLT/HYPER PINK	c/o -1/2	3.5Y-7Y	■



600

\$55.00

W0572

654144 | NIKE KIDS FUSION RUN 3 (PS)

MIDSOLE: Full-length Phylon midsole provides durable lightweight cushioning.

The ultimate combination of cushioning, and a smooth ride.

OUTSOLE: Rubber outsole enhances durability at high-wear zones.

UPPER: Zonal sandwich mesh with a dynamic midfoot system provides a superior fit and support.

600	HOT PINK/BLACK/FIREBERRY/WHITE	2/1-4/2	10.5C-3Y	■
-----	--------------------------------	---------	----------	---



600



003

\$44.00

W0022

654147 | NIKE KIDS FUSION RUN 3 (TDV)

UPPER: Zonal sandwich mesh provides a superior fit and support. Hook and loop closure for easy entry.

OUTSOLE: N/A

MIDSOLE: Phylon midsole offers a unique blend of plush, lightweight cushioning, and enhanced support.

The ultimate combination of cushioning, and a smooth ride.

600	HOT PINK/BLACK/FIREBERRY/WHITE	2/1-4/2	W)2C-10C	■
-----	--------------------------------	---------	----------	---

003	LT MAGNET GREY/HYPER JADE/VOLT/HYPER PINK	c/o -1/2	W)2C-10C	■
-----	---	----------	----------	---



401



005

\$70.00

W0053

642755 | NIKE FLEX 2014 RUN (GS)

MIDSOLE: Soft Phylon core midsole gives great cushioning right where you need it.

OUTSOLE: Articulated Phylite carrier midsole provides flexible lightweight cushioning with great durability.

UPPER: Stretched inner sleeve with breathable overlay saddle gives the best fit and breathability.

Flexible, lightweight, comfort are the best way to describe this ride.

401	CLEARWATER/BLUE LAGOON/PINK POW/WHITE	1/1-4/2	3.5Y-7Y	■
-----	---------------------------------------	---------	---------	---

005	PURE PLATINUM/HOT PINK/WHITE/BLACK	1/1-4/2	3.5Y-7Y	■
-----	------------------------------------	---------	---------	---



401

\$55.00

W0572

642758 | NIKE FLEX 2014 RUN (PS)

OUTSOLE: N/A

MIDSOLE: Phylon midsole provides flexible lightweight cushioning.

UPPER: Stretched inner sleeve with breathable overlay saddle gives the best fit and breathability.

Flexible, lightweight, comfort are the best way to describe this ride.

401	CLEARWATER/BLUE LAGOON/PINK POW/WHITE	1/1-4/2	10.5C-3Y	■
-----	---------------------------------------	---------	----------	---



401



005

\$44.00

W0022

642760 | NIKE FLEX 2014 RUN (TDV)

OUTSOLE: N/A

MIDSOLE: Phylon midsole provides flexible lightweight cushioning.

UPPER: Stretched inner sleeve with breathable overlay saddle gives the best fit and breathability.

Flexible, lightweight, comfort are the best way to describe this ride.

401	CLEARWATER/BLUE LAGOON/PINK POW/WHITE	1/1-4/2	W)2C-10C	■
005	PURE PLATINUM/HOT PINK/WHITE/BLACK	1/1-4/2	W)2C-10C	■



400



502



601



501

\$62.00

W0013

653698 | NIKE FLEX EXPERIENCE 3 (GS)

UPPER: Simple pattern and reduced layering enhances flexibility, bootie construction provides great lockdown.

Youthful with flexible lightweight comfort are the best way to describe this shoe.

MIDSOLE: Natural motion articulated Phylite gives a lightweight ride with great transition.

OUTSOLE: Rubber pods in toe and heel areas for high wear.

400	CLEARWATER/BLUE LAGOON/PINK POW/WHITE	1/1-4/2	3.5Y-7Y	■
502	BOLD BERRY/BLACK/WHITE/PINK POW	1/1-4/2	3.5Y-7Y	■
601	HOT PINK/FIREBERRY/WHITE/METALLIC SILVER	2/1-4/2	3.5Y-7Y	■
501	HYPER GRAPE/PHOTO BLUE/HYPER PINK/METALLIC SILVER	c/o -4/2	3.5Y-7Y	
001	BLACK/WHITE/HYPER PINK	c/o -4/2	3.5Y-7Y	



001



400



502



601



501

\$52.00

W0062

653699 | NIKE FLEX EXPERIENCE 3 (PSV)

UPPER: Simple pattern and reduced layering enhances flexibility, bootie construction provides great lockdown.

Youthful with flexible lightweight comfort are the best way to describe this shoe.

MIDSOLE: Natural motion articulated Phylite gives a lightweight ride with great transition.

OUTSOLE: Rubber pods in toe and heel areas for high wear.

400	CLEARWATER/BLUE LAGOON/PINK POW/WHITE	1/1-4/2	10.5C-3Y	■
502	BOLD BERRY/BLACK/WHITE/PINK POW	1/1-4/2	10.5C-3Y	■
601	HOT PINK/FIREBERRY/WHITE/METALLIC SILVER	2/1-4/2	10.5C-3Y	■
501	HYPER GRAPE/PHOTO BLUE/HYPER PINK/METALLIC SILVER	c/o -4/2	10.5C-3Y	
001	BLACK/WHITE/HYPER PINK	c/o -4/2	10.5C-3Y	



001



\$42.00

W0012

653700 | NIKE FLEX EXPERIENCE 3 (TDV)

OUTSOLE: N a.

UPPER: Simple pattern and reduced layering enhances flexibility, bootie construction provides great lockdown.

Youthful with flexible lightweight comfort are the best way to describe this shoe.

MIDSOLE: Natural motion articulated Phylite gives a lightweight ride with great transition.

400	CLEARWATER/BLUE LAGOON/PINK POW/WHITE	1/1-4/2	W)2C-10C	■
502	BOLD BERRY/BLACK/WHITE/PINK POW	1/1-4/2	W)2C-10C	■
601	HOT PINK/FIREBERRY/WHITE/METALLIC SILVER	2/1-4/2	W)2C-10C	■
001	BLACK/WHITE//HYPER PINK	c/o -4/2	W)2C-10C	



\$55.00

W0572

685167 | NIKE DOWNSHIFTER 6 (GS/PS)

For the runner who's looking for a daily trainer that provides a great combination of cushioning and breathability for all-day comfort and versatility.

UPPER: Sandwich mesh combined with supportive no sew synthetic provide optimal midfoot support while leather overlays provide heel lockdown.

OUTSOLE: Strategically placed rubber and flex grooves provide durability and traction with a great natural transition.

MIDSOLE: Articulated full-length Phylon midsole that provides lightweight, resilient cushioning as well as a more natural underfoot feel.

400	CLEARWATER/BLUE LAGOON/PINK POW/VOLT	1/1-10/2	10.5C-7Y	■
600	HOT PINK/WHITE/COOL GREY/METALLIC SILVER	1/1-4/2	10.5C-7Y	■
501	BOLD BERRY/PINK POW/TOTAL ORANGE/BLACK	2/1-4/2	10.5C-7Y	■
001	BLACK/HYPER PINK/WHITE/METALLIC SILVER	c/o -10/2	10.5C-7Y	



\$44.00

W0022

685164 | NIKE DOWNSHIFTER 6 (TD)

UPPER: Sandwich mesh combined with supportive no sew synthetic provide optimal midfoot support while leather overlays provide heel lockdown.

MIDSOLE: Articulated, full-length Phylon midsole provides lightweight, responsive cushioning and a natural feel underfoot.

OUTSOLE: Deep flex grooves provide a more efficient, natural range of motion.

Trainer that provides a great combination of cushioning and breathability for all-day comfort and versatility.

400	CLEARWATER/BLUE LAGOON/PINK POW/VOLT	1/1-4/2	W)2C-10C	■
600	HOT PINK/WHITE/COOL GREY/METALLIC SILVER	1/1-7/2	W)2C-10C	■
501	BOLD BERRY/PINK POW/TOTAL ORANGE/BLACK	2/1-4/2	W)2C-10C	■
001	BLACK/HYPER PINK/WHITE/METALLIC SILVER	c/o -10/2	W)2C-10C	



402



009



010



008

\$52.00

W0062

555090 | NIKE REVOLUTION 2 (GS)

A shoe that delivers breathable comfort, a smooth transition, and a young look for running and everyday use.

MIDSOLE: Articulated, full-length Phylon midsole provides lightweight, responsive cushioning and a natural feel underfoot.

UPPER: Lightweight open mesh throughout the upper enhances breathability and comfort. Strategically placed supportive leather overlays for support.

OUTSOLE: Environmentally preferred rubber in a modified Waffle outsole configuration. Deep flex grooves provide a more efficient, natural range of motion.

402	CLEARWATER/BLUE LAGOON/VOLT/METALLIC SILVER	1/1-7/2	3.5Y-7Y	■
009	BLACK/WOLF GREY/WHITE/METALLIC SILVER	1/1-4/2	3.5Y-7Y	■
010	PURE PLATINUM/HOT PINK/BLACK	2/1-4/2	3.5Y-7Y	■
008	WOLF GREY/MAGNET GREY/HYPER JADE/HYPER PINK	c/o -10/2	3.5Y-7Y	



402



009



010



008

\$46.00

W0032

555091 | NIKE REVOLUTION 2 (PSV)

A shoe that delivers breathable comfort, a smooth transition, and a young look for running and everyday use.

MIDSOLE: Articulated, full-length Phylon midsole provides lightweight, responsive cushioning and a natural feel underfoot.

UPPER: Lightweight open mesh throughout the upper enhances breathability and comfort. Strategically placed supportive leather overlays for support.

OUTSOLE: Deep flex grooves provide a more efficient, natural range of motion.

402	CLEARWATER/BLUE LAGOON/VOLT/METALLIC SILVER	1/1-7/2	10.5C-3Y	■
009	BLACK/WOLF GREY/WHITE/METALLIC SILVER	1/1-4/2	10.5C-3Y	■
010	PURE PLATINUM/HOT PINK/BLACK	2/1-4/2	10.5C-3Y	■
008	WOLF GREY/MAGNET GREY/HYPER JADE/HYPER PINK	c/o -10/2	10.5C-3Y	



402



010



008

\$42.00

W0012

555092 | NIKE REVOLUTION 2 (TDV)

A shoe that delivers breathable comfort, a smooth transition, and a young look for running and everyday use.

MIDSOLE: Articulated, full-length Phylon midsole provides lightweight, responsive cushioning and a natural feel underfoot.

UPPER: Lightweight open mesh throughout the upper enhances breathability and comfort. Strategically placed supportive leather overlays for support.

OUTSOLE: Deep flex grooves provide a more efficient, natural range of motion.

402	CLEARWATER/BLUE LAGOON/VOLT/METALLIC SILVER	1/1-4/2	W)2C-10C	■
010	PURE PLATINUM/HOT PINK/BLACK	2/1-4/2	W)2C-10C	■
008	WOLF GREY/MAGNET GREY/HYPER JADE/HYPER PINK	c/o -10/2	W)2C-10C	



600



401



001

\$62.00

W0013

653885 | NIKE FLEX SUPREME TR 3 (GS/PS)

UPPER: Bonded mesh panels and leather overlays offer maximum breathability, flexibility and durability where needed.

OUTSOLE: Existing outsole that is Phylon for flexibility and strategically place rubber pods for durability.

MIDSOLE: Existing midsole single density Phylon.

All day, everyday, school and play shoe that offers natural motion and supreme comfort in a training shoe.

600	PINK POW/TOTAL ORANGE/WHITE/BOLD BERRY	1/1-4/2	10.5C-7Y	■
401	BLUE LAGOON/PINK POW/WHITE/VOLT	1/1-4/2	10.5C-7Y	■
001	BLACK/VIVID PINK/WHITE	c/o -7/2	10.5C-7Y	



600



401



001

\$44.00

W0022

653886 | NIKE FLEX SUPREME TR 3 (TDV)

UPPER: Bonded mesh panels and leather overlays offer maximum breathability, flexibility and durability where needed.

All day, everyday, school and play shoe that offers natural motion and supreme comfort in a training shoe with alternate closure.

OUTSOLE: Existing outsole that is Phylon for flexibility and strategically place rubber pods for durability.

MIDSOLE: Existing midsole single density Phylon.

600	PINK POW/TOTAL ORANGE/WHITE/BOLD BERRY	1/1-4/2	W)2C-10C	■
401	BLUE LAGOON/PINK POW/WHITE/VOLT	1/1-4/2	W)2C-10C	■
001	BLACK/VIVID PINK/WHITE	c/o -7/2	W)2C-10C	



100

\$46.00

W0032

652877 | YA SIDELINE III INSERT

A low-profile shoe for the cheerleader looking for flexibility, support and lightweight cushioning.

UPPER: Combination of synthetic leather and mesh for dynamic support and durability color slide cards for customization.

OUTSOLE: Composed of non-marking rubber with medial pivot point for enhanced performance on multiple surfaces.

MIDSOLE: Double lasted Phylon midsole ~ internal flex grooves for enhanced flexibility.

100	WHITE/PURE PLATINUM/WHITE	c/o -10/2	8C-3Y	
-----	---------------------------	-----------	-------	--





606



103

\$32.00

W0061

454478 | PICO 4 (TDV)

Pico 4 provides a lightweight, durable and flexible shoe that offers a fun aesthetic as well as easy on off for parents and toddler on the go.

MIDSOLE:

UPPER: Hook-and-loop double strap closure for secure fit and easy on off reduced overlays from previous model for improved flexibility.

OUTSOLE: Proven, existing, lightweight Phylon tooling for traction, durability and flexibility color dams on outsole for color pop opportunity.

606	PINK POW/BOLD BERRY//WHITE	1/1-10/2	2C-10C	■
103	WHITE/SPARK//PRISM PINK	c/o -10/2	2C-10C	



103

\$32.00

W0061

454562 | PICO 4 (WIDE) (TDV)

Pico 4 provides a lightweight, durable and flexible shoe that offers a fun aesthetic as well as easy on off for parents and toddler on the go.

MIDSOLE: N/A

UPPER: Hook-and-loop double strap closure for secure fit and easy on off reduced overlays from previous model for improved flexibility.

OUTSOLE: Proven, existing, lightweight Phylon tooling for traction, durability and flexibility color dams on outsole for color pop opportunity.

103	WHITE/SPARK//PRISM PINK	c/o -7/2	2C-10C	
-----	-------------------------	----------	--------	--



148



484



641

\$55.00

W5203

599062 | JR HYPERVENOM PHELON FG

A core level product designed for the junior player seeking benefits of agility and finishing. For use on firm ground surfaces.

MIDSOLE: Innovative Nike Jr. Support sockliner does mirror the natural junior athlete's foot shape and provides great support and low-profile cushioning.

OUTSOLE: Innovative full-length TPU plate with stud pattern engineered especially for agility and traction on firm ground.

UPPER: Soft Ten. O trophy synthetic enhances foot to ball touch.

148	WHITE/TOTAL CRIMSON//BLUE LAGOON	c/o -4/2	10C-6Y
484	CLEARWATER/BLUE LAGOON//TOTAL CRIMSON	2/1-4/2	10C-6Y ■
641	PINK POW/POLAR/WHITE/CHROME	1/1-4/2	10C-6Y ■



148



484

\$55.00

W5203

599811 | JR HYPERVENOM PHELON IC

A core level product designed for the junior player seeking benefits of agility and finishing. For use on indoor court surfaces.

OUTSOLE: Molded rubber with innovative traction pattern designed especially for agility and traction on indoor surfaces.

MIDSOLE: Innovative Nike Jr. Support sockliner does mirror the natural junior athlete's foot shape and provides great support and low-profile cushioning.

UPPER: Soft Ten. O trophy synthetic enhances foot to ball touch.

148	WHITE/TOTAL CRIMSON//BLUE LAGOON	c/o -4/2	10C-6Y
484	CLEARWATER/BLUE LAGOON//TOTAL CRIMSON	2/1-4/2	10C-6Y ■



148



484

\$55.00

W5203

599847 | JR HYPERVENOM PHELON TF

A core level product designed for the junior player seeking benefits of agility and finishing. For use on turf surfaces.

OUTSOLE: Molded rubber with multidirectional traction designed for agility and traction on turf surfaces.

MIDSOLE: Innovative Nike Jr. Support sockliner does mirror the natural junior athlete's foot shape and provides great support and low-profile cushioning.

UPPER: Soft Ten. O trophy synthetic enhances foot to ball touch.

148	WHITE/TOTAL CRIMSON//BLUE LAGOON	c/o -4/2	10C-6Y
484	CLEARWATER/BLUE LAGOON//TOTAL CRIMSON	2/1-4/2	10C-6Y ■



148



484

\$40.00

W0022

599073 | JR HYPERVENOM PHADE FG-R

A value level product designed for the junior player seeking benefits of finishing. For use on firm ground surfaces.

MIDSOLE: Die-cut EVA sock-liner delivers comfort.

OUTSOLE: Injected rubber combining conical forefoot studs and oblong studs on the heel.

UPPER: Soft Ten. O trophy synthetic enhances foot to ball touch.

148	WHITE/BLUE LAGOON/TOTAL CRIMSON	c/o -4/2	10C-6Y
484	CLEARWATER/BLUE LAGOON/TOTAL CRIMSON	2/1-4/2	10C-6Y ■



148



484

\$40.00

W0022

717055 | JR HYPERVENOM PHADE (V) FG-R

MIDSOLE:

OUTSOLE: INJECTED RUBBER COMBINING CONICAL FOREFOOT STUDS AND OBLONG STUDS ON THE HEEL.

UPPER:

148	WHITE/BLUE LAGOON/TOTAL CRIMSON	c/o -7/31	10C, 10.5C, 11C, 11.5C, 12C, 12.5C 13C
484	CLEARWATER/BLUE LAGOON/TOTAL CRIMSON	1/1-7/31	10C, 10.5C, 11C, 11.5C, 12C, 12.5C 13C ■



170



760

\$110.00

W0506

651620 | JR MERCURIAL VAPOR X FG

OUTSOLE: Full-length TPU outsole delivers explosive traction in all directions.

MIDSOLE: Lightweight perforated sockliner with textile top cloth mirrors the natural foot shape and creates low-profile cushioning.

UPPER: Lightweight tie-in avail upper, micro texture, and a new seamless design create a sock-like feel and look with unrivaled lockdown and touch.

Top junior innovation for speed. Designed to amplify lockdown, ball touch at high speeds and explosive motion. For use on firm natural surfaces.

170	WHITE/HYPER PINK/VOLT	c/o -4/2	1Y-6Y
760	VOLT/BLACK//HYPER PINK	2/1-4/2	1Y-6Y ■



170



760



434

\$60.00

W0033

651634 | JR MERCURIAL VICTORY V FG

UPPER: Trophy touch, micro texture, and an internal cage lock the foot down while providing a soft touch.

MIDSOLE: Contoured sock-liner with textile top cloth delivers low-profile cushioning.

OUTSOLE: Full-length TPU outsole delivers explosive traction in all directions.

Junior innovation for speed. Designed to amplify lockdown, ball touch at high speeds, and explosive motion. For use on firm natural surfaces.

170	WHITE/HYPER PINK/VOLT	c/o -4/2	10C-6Y
760	VOLT/BLACK//HYPER PINK	2/1-4/2	10C-6Y ■
434	ICE CUBE BLUE/FLASH LIME/WHITE/CHROME	1/1-4/2	10C-6Y ■



170



760

\$60.00  
W0033

651639 | JR MERCURIAL VICTORY V IC

UPPER: Trophy touch, micro texture, and an internal cage lock the foot down while providing a soft touch.

MIDSOLE: Contoured sock-liner with textile top cloth delivers low-profile cushioning.

OUTSOLE: Full-length non-marking rubber is designed for the explosive traction edge on indoor surfaces.

Junior innovation for speed. Designed to amplify lockdown, ball touch at high speeds, and explosive motion. For use on court surfaces.

170	WHITE/HYPER PINK/VOLT	c/o -4/2	10C-6Y
760	VOLT/BLACK//HYPER PINK	2/1-4/2	10C-6Y



170



760

\$60.00  
W0033

651641 | JR MERCURIAL VICTORY V TF

UPPER: Trophy touch, micro texture, and an internal cage lock the foot down while providing a soft touch.

MIDSOLE: Contoured sock-liner with textile top cloth delivers low-profile cushioning.

OUTSOLE: Full-length non-marking rubber is designed for the explosive traction edge on artificial turf.

Junior innovation for speed. Designed to amplify lockdown, ball touch at high speeds, and explosive motion. For use on turf surfaces.

170	WHITE/HYPER PINK/VOLT	c/o -4/2	10C-6Y
760	VOLT/BLACK//HYPER PINK	2/1-4/2	10C-6Y



170



760



434

\$45.00  
W5742

651642 | JR MERCURIAL VORTEX II FG-R

Junior product-inspired by speed. Designed to amplify ball touch at high speeds. For use on firm natural surfaces.

UPPER: Trophy synthetic leather with micro texture provides a soft touch and stable fit.

MIDSOLE: Die-cut EVA sock-liner delivers comfort and support.

OUTSOLE: TPU plate combining conical forefoot studs and oblong heel studs.

170	WHITE/HYPER PINK/VOLT	c/o -4/2	10C-6Y
760	VOLT/BLACK//HYPER PINK	2/1-4/2	10C-6Y
434	ICE CUBE BLUE/FLASH LIME/BLUE LAGOON/WHITE	1/1-4/2	10C-6Y



170



760

\$45.00  
W5742

717082 | JR MERCURIAL VORTEX 2 (V) FG-R

Junior product-inspired by speed. VELCRO® lace for easy lock in. For use on natural grass surfaces.

UPPER: Trophy synthetic leather with micro texture provides a soft touch and stable fit.

MIDSOLE: Die-cut EVA sock-liner delivers comfort and support.

OUTSOLE: Molded rubber with multidirectional studs.

170	WHITE/HYPER PINK/VOLT	c/o -7/31	10C, 10.5C, 11C, 11.5C, 12C, 12.5C 13C
760	VOLT/BLACK//HYPER PINK	1/1-7/31	10C, 10.5C, 11C, 11.5C, 12C, 12.5C 13C



130



380

\$55.00

W5203

651653 | JR MAGISTA ONDA FG

**OUTSOLE:** Full-length TPU base works naturally with the foot and direct inject conical TPU studs provide ideal rotational traction.

Designed for the junior player, provides a comfortable, soft upper, amplified texture, and 360 rotational agility. For use on firm natural surfaces.

**UPPER:** Trophy synthetic upper material wraps and protects the foot comfortably while amplified texture throughout the upper enhances ball feel.

**MIDSOLE:** Synthetic top cloth sockliner supports the foot while a die-cut EVA sockliner base provides low-profile cushioning.

130	WHITE/BLACK/TOTAL ORANGE/POISON GREEN	c/o -4/2	10C-6Y	
380	POISON GREEN/FLASH LIME/BLACK/TOTAL ORANGE	2/1-4/2	10C-6Y	■



130



380

\$55.00

W5203

651655 | JR MAGISTA ONDA IC

Designed for the junior player, provides a comfortable, soft upper, amplified texture, and 360 rotational agility. For use on court surfaces.

**UPPER:** Trophy synthetic upper material wraps and protects the foot comfortably while amplified texture throughout the upper enhances ball feel.

**MIDSOLE:** Synthetic top cloth sockliner supports the foot while a die-cut EVA sockliner base provides low-profile cushioning.

**OUTSOLE:** Full-length non-marking rubber is designed for the devastatingly creative player on indoor surfaces.

130	WHITE/BLACK/TOTAL ORANGE/POISON GREEN	c/o -4/2	10C-6Y	
380	POISON GREEN/FLASH LIME/BLACK/TOTAL ORANGE	2/1-4/2	10C-6Y	■



130



380

\$55.00

W5203

651657 | JR MAGISTA ONDA TF

Designed for the junior player, provides a comfortable, soft upper, amplified texture, and 360 rotational agility. For use on firm natural surfaces.

**UPPER:** Trophy synthetic upper material wraps and protects the foot comfortably while amplified texture throughout the upper enhances ball feel.

**OUTSOLE:** Full-length non-marking rubber is designed for the devastatingly creative player on artificial turf.

**MIDSOLE:** Synthetic top cloth sockliner supports the foot while a die-cut EVA sockliner base provides low-profile cushioning.

130	WHITE/BLACK/TOTAL ORANGE/POISON GREEN	c/o -4/2	10C-6Y	
380	POISON GREEN/FLASH LIME/BLACK/TOTAL ORANGE	2/1-4/2	10C-6Y	■



130



380



134

\$40.00

W0022

651551 | JR MAGISTA OLA FG-R

MIDSOLE: Die-cut EVA sock-liner delivers comfort and support.

UPPER: Trophy synthetic leather with screen print of amplified texture provides a soft touch and comfortable fit.

Inspired by the creative player and built for the junior player. Designed for a comfortable fit and great ball feel. For use on firm natural surfaces.

OUTSOLE: TPU plate combining conical forefoot studs and oblong heel studs.

130	WHITE/BLACK/TOTAL ORANGE/POISON GREEN	c/o -4/2	10C-6Y	
380	POISON GREEN/FLASH LIME/BLACK/TOTAL ORANGE	2/1-4/2	10C-6Y	■
134	WHITE/VAPOR GREEN/MENTA/BLACK	2/1-4/2	10C-6Y	■



380

\$40.00

W0022

717056 | JR MAGISTA OLA (V) FG-R

MIDSOLE: Die-cut EVA sock-liner delivers comfort and support.

UPPER: Trophy synthetic leather with screen print of amplified texture provides a soft touch and comfortable fit. VELCRO® lace for easy lock in.

Inspired by the creative player and built for preschool kids. Designed for a comfortable fit and great ball feel. For use on firm natural surfaces.

OUTSOLE: Molded rubber with multidirectional studs.

380	POISON GREEN/FLASH LIME/BLACK/TOTAL ORANGE	1/1-7/31	10C, 10.5C, 11C, 11.5C, 12C, 12.5C 13C	■
-----	--	----------	--	---



174



470



010

\$50.00

W0572

630861 | JR TIEMPO GENIO LEATHER FG

OUTSOLE: TPU plate with conical and bladed studs configuration to provide traction and stability, with zero stud pressure.

Core level boot offering the junior players natural leather upper for touch and comfort. For use on firm ground surfaces.

MIDSOLE: Kids' specific EVA sockliner provides the extra heel cup and arch support.

UPPER: Soft full-grain natural leather for comfort and good ball touch.

174	WHITE/SOAR//VOLT	c/o -4/2	1Y-6Y	
470	SOAR//VOLT	2/1-4/2	1Y-6Y	■
010	BLACK/BLACK//WHITE	c/o -10/2	1Y-6Y	



174



470



010

\$50.00

W0572

631528 | JR TIEMPO GENIO LEATHER IC

MIDSOLE: Full-length Phylon midsole for cushioning and kids' specific EVA sockliner with heel cup provides extra comfort and arch support.

Core level boot offering the junior players natural leather upper for touch and comfort. For use on indoor court surfaces.

UPPER: Soft full-grain natural leather for comfort and good ball touch.

OUTSOLE: Articulated outsole with non-marking gum rubber and newly designed traction pattern and pivot point for optimal traction on indoor court.

174	WHITE/SOAR//VOLT	c/o -4/2	10C-6Y
470	SOAR//I/VOLT	2/1-4/2	10C-6Y ■
010	BLACK/BLACK//WHITE	c/o -10/2	10C-6Y



174



470



010

\$50.00

W0572

631529 | JR TIEMPO GENIO LEATHER TF

MIDSOLE: Full-length Phylon midsole for cushioning and kids' specific EVA sockliner with heel cup provides extra comfort and arch support.

Core level boot offering the junior players natural leather upper for touch and comfort. For use on turf surfaces.

OUTSOLE: Articulated outsole with turf studs and pivot point for optimal traction on turf surfaces.

UPPER: Soft full-grain natural leather for comfort and good ball touch.

174	WHITE/SOAR//VOLT	c/o -4/2	10C-6Y
470	SOAR//I/VOLT	2/1-4/2	10C-6Y ■
010	BLACK/BLACK//WHITE	c/o -10/2	10C-6Y



174



010

\$45.00

W5742

658103 | JR TIEMPO V4 IC

UPPER: Soft synthetic vamp offers a lightweight upper for enhanced ball touch and feel. VELCRO® lace for easy lock in.

MIDSOLE: Die-cut EVA sock-liner delivers comfort.

Junior level product. For use on indoor court surfaces.

OUTSOLE: Gum rubber with multidirectional traction pattern.

174	WHITE/SOAR//VOLT	c/o -4/2	10C-6Y
010	BLACK/BLACK//WHITE	c/o -10/2	10C-6Y



174



470



010

\$35.00

W5291

631286 | JR TIEMPO RIO II FG-R

MIDSOLE: Die-cut EVA sock-liner delivers comfort.

UPPER: Soft synthetic vamp offers a lightweight upper for enhanced ball touch and feel.

Entry-level product for the junior player looking for a good touch. For use on natural or artificial surfaces.

OUTSOLE: Injected rubber combining conical forefoot studs and bladed studs on the heel.

174	WHITE/SOAR//VOLT	c/o -4/2	10C-6Y	
470	SOAR//VOLT	2/1-4/2	10C-6Y	■
010	BLACK//WHITE	c/o -10/2	10C-6Y	



174



010

\$35.00

W5291

631526 | JR TIEMPO RIO II IC

MIDSOLE: Die-cut EVA sock-liner delivers comfort.

Entry-level product for the junior player looking for a modern aesthetic. For use on indoor court surface.

UPPER: Soft synthetic vamp offers a lightweight upper for enhanced ball touch and feel.

OUTSOLE: Gum rubber with multidirectional traction pattern.

174	WHITE/SOAR//VOLT	c/o -4/2	10C-6Y	
010	BLACK//WHITE	c/o -10/2	10C-6Y	



701



480

\$55.00

W5203

685354 | JR NIKE ELASTICO PRO III IC

UPPER: Soft embossed synthetic upper and breathable mesh locks the foot down while providing a soft touch.

OUTSOLE: Full-length gum rubber provides explosive quickness in all directions on indoor surfaces.

Junior level product brings new innovation specific to the fastest small sided players around fit, comfort and traction. For use on indoor courts.

MIDSOLE: Molded sockliner delivers low-profile underfoot comfort.

701	VOLT/WHITE//BLACK	1/1-4/2	10C-6Y	■
480	BLUE LAGOON/BLACK/WHITE/TOTAL CRIMSON	1/1-4/2	10C-6Y	■



701



480

\$55.00

W5203

685356 | JR NIKE ELASTICO PRO III TF

UPPER: Soft embossed synthetic upper and breathable mesh locks the foot down while providing a soft touch.

Junior level product brings new innovation specific to the fastest small sided players around fit, comfort and traction. For use on turf.

OUTSOLE: Full-length gum rubber provides explosive quickness in all directions on artificial surfaces.

MIDSOLE: Molded sockliner delivers low-profile underfoot comfort.

701	VOLT/WHITE//BLACK	1/1-4/2	10C-6Y	■
480	BLUE LAGOON/BLACK/WHITE/TOTAL CRIMSON	1/1-4/2	10C-6Y	■





077



411

\$50.00

W0572

580443 | JR NIKE BOMBA II

MIDSOLE: Die-cut EVA sockliner for cushioning in the forefoot and heel.

UPPER: New synthetic has the fit and feel of leather, while also being lightweight and not overstretching.

Junior level product brings new innovation specific to the small sided turf game around traction, fit and comfort.

OUTSOLE: Small sided rubber turf for quality traction and great underfoot ball control.

077	BLACK/VOLT//VOLT	1/1-4/2	10C-6Y	■
411	BLUE LAGOON/WHITE//WHITE	1/1-4/2	10C-6Y	■



808

\$50.00

W0572

580450 | JR NIKE DAVINHO

MIDSOLE: Die-cut EVA sockliner for cushioning in the forefoot and heel.

Junior level product brings new innovation specific to the small sided turf game around traction, fit and comfort.

UPPER: New textile upper has same fit of leather but comfort and breathability of mesh.

OUTSOLE: Small sided gum rubber with multi-directional grip for optimal traction and underfoot ball control.

808	ATOMIC ORANGE/TOTAL ORANGE/WHITE/BLACK	1/1-4/2	10C-6Y	■
-----	--	---------	--------	---